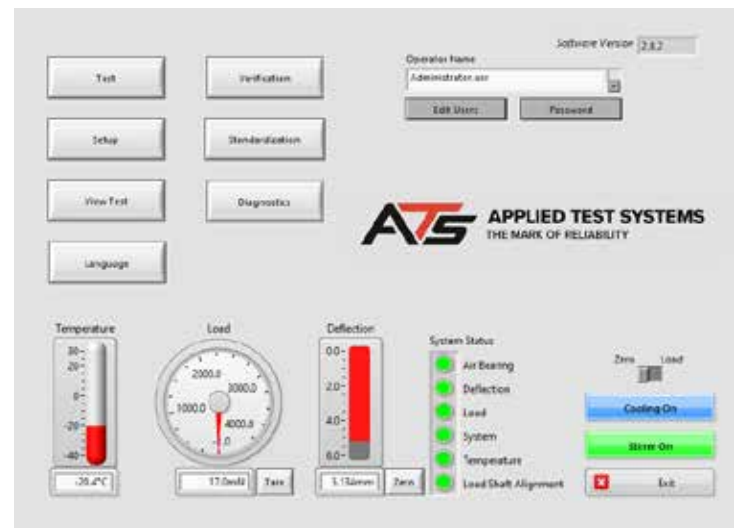
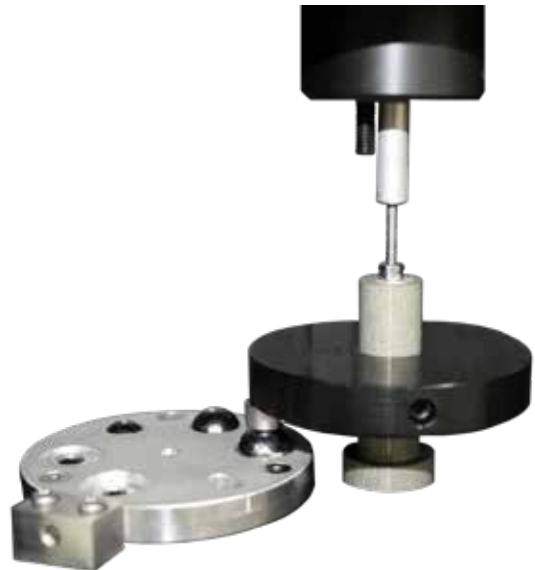


BBR 2S & 3 Enhancements

The upgrade includes a new software release (2.8.1 and later versions) and a newly redesigned LVDT calibration disk and weight pan. This upgrade can be performed by qualified ATS calibration technicians during an on-site verification of your BBR2S or BBR3. You may also choose to send the BBR to ATS for the work to be performed. Please contact the ATS Service Department at atsservice@atspa.com for additional details.

New Software Enhancements:

- New Algorithm for LVDT standardization which improves calibration curve “fit” for the LVDT used with the BBR2S.
- Easier to understand instructions for Standardizing and Verifying the BBR, based on feedback from our customers.
- Standardization self-check routine incorporated for Load and Deflection Standardizations. This will alert operator to potential sensor issues or operator error in performing the standardization that could corrupt the calibration information saved in the software.
- Addition of Tare button for load cell output and Zero button for LVDT output to the main menu screen. This allows operator to re-tare or zero readouts without the need to re-standardize.
- Improvements to BBR3 Temperature Standardization



Redesign of Calibration Disk & Weight Pan

- Redesign allows for standardizing the LVDT sensor with less possible error, by minimizing variations in positioning the weight pan during standardization
- Improved repeatability of deflection measurements