



Contents

Definitions..... 1

Tools Needed..... 2

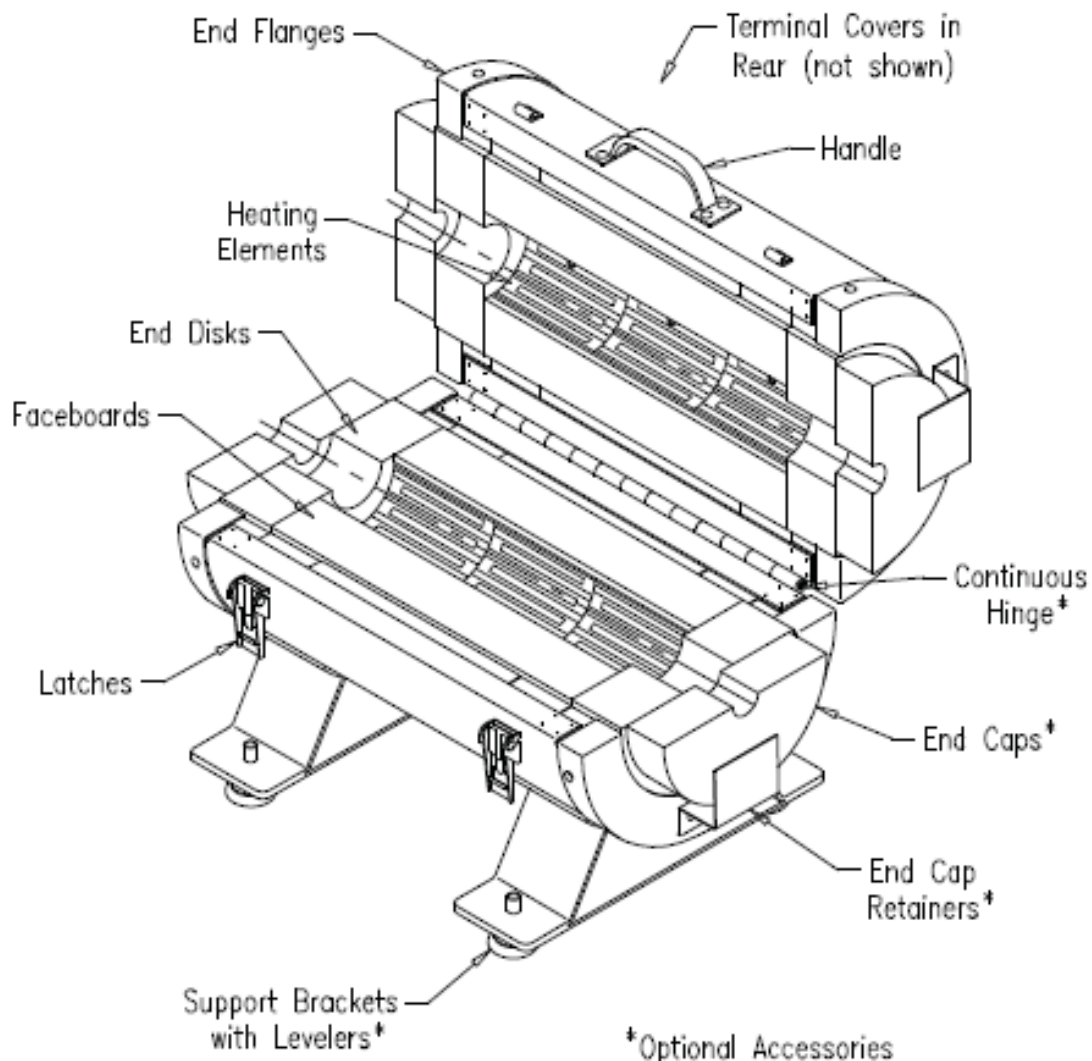
How To..... 3

Fitting Replacement Faceboards..... 10

Series 3210 Definitions

SERIES 3210

Split Tube Furnace
2200°F (1200°C) Maximum



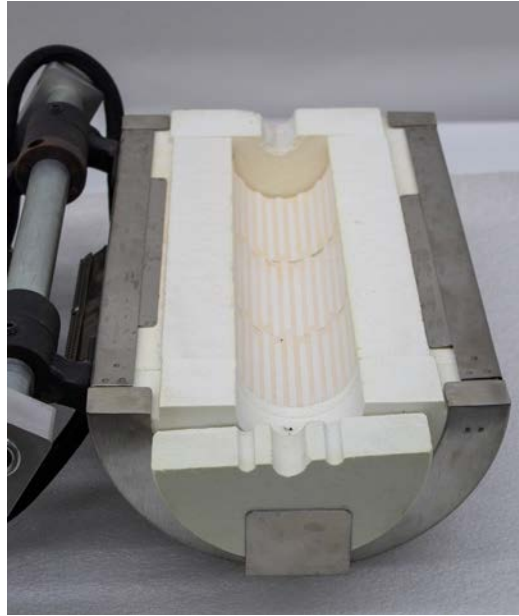
Tools Needed

- Screw Driver
- Hammer
- Straight Edge
- Pipe Clamps

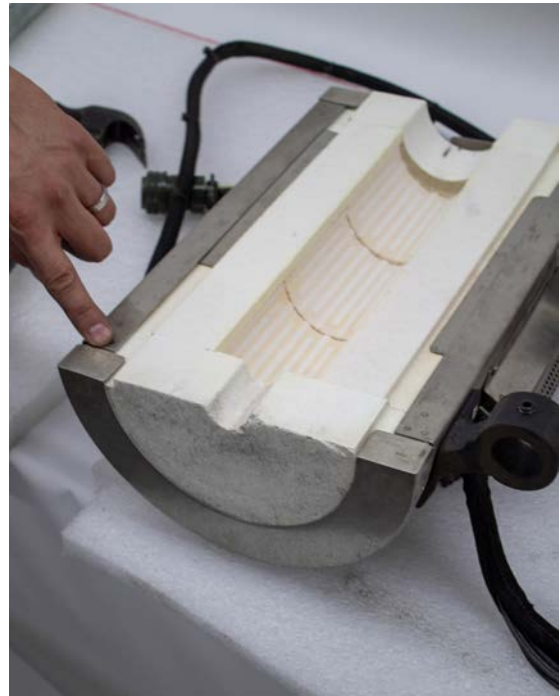
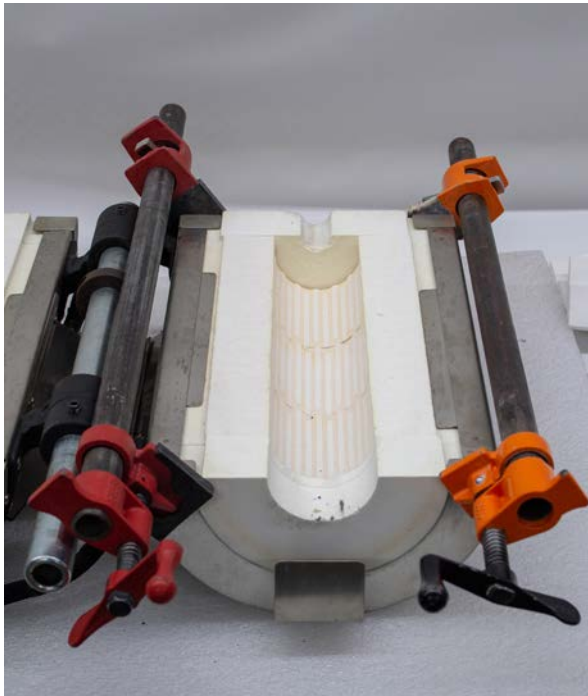


How To

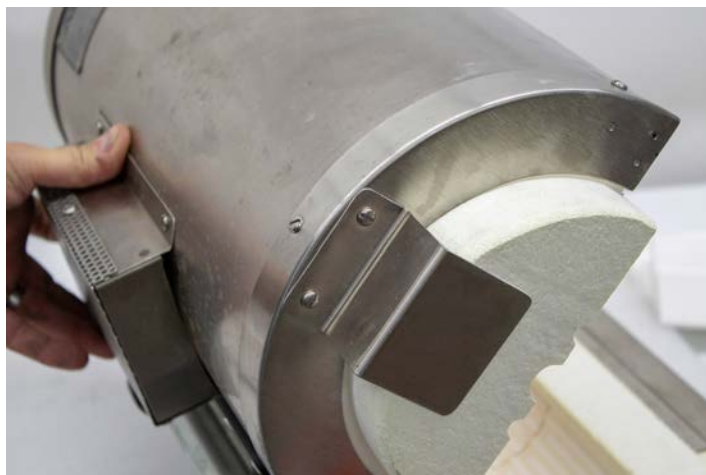
Step 1: Lay furnace in the horizontal position. Remove furnace bar or half of the hinge.



Step 2: Remove end flanges from both ends of the furnace. A pipe clamp should be used to remove pressure from end flanges and screws.



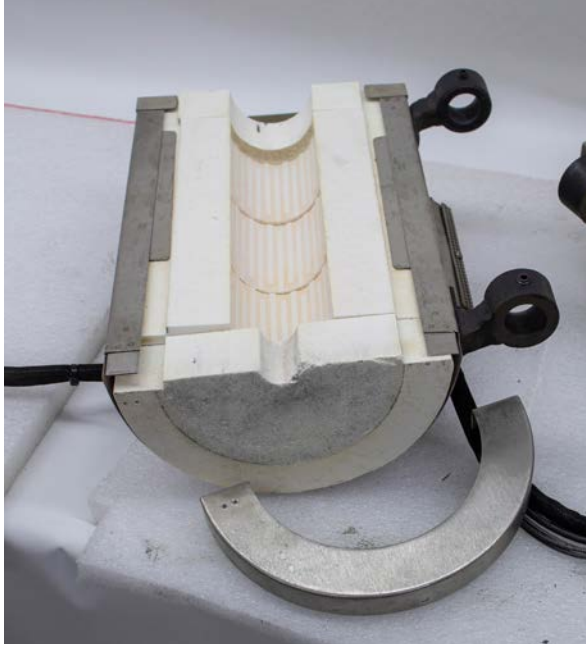
Step 3: End flanges are held in place by generally 3 screws. Remove the screws completely and pull the flanges off.



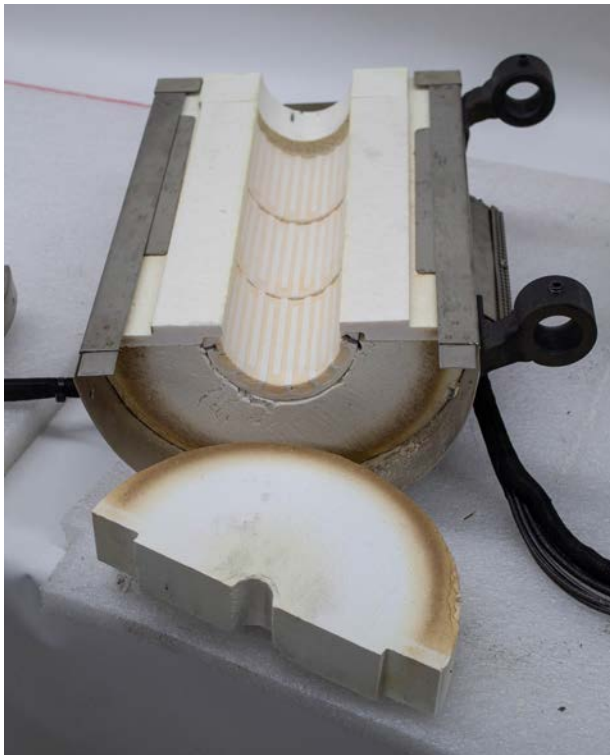
Step 4: Flanges can be tapped off using a straight edge.



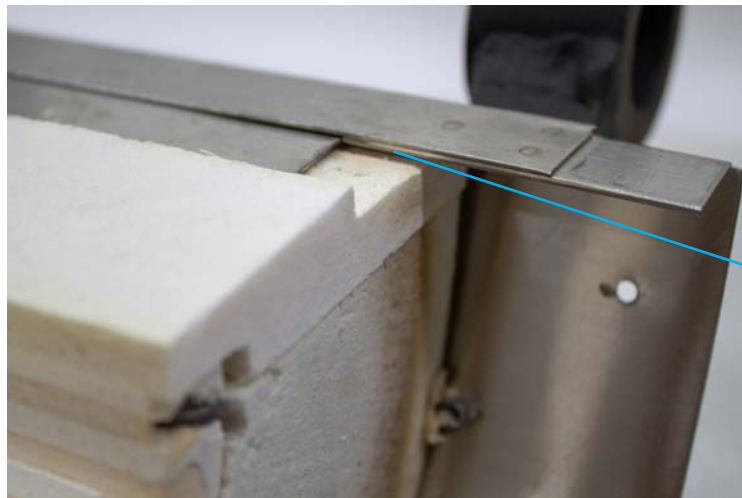
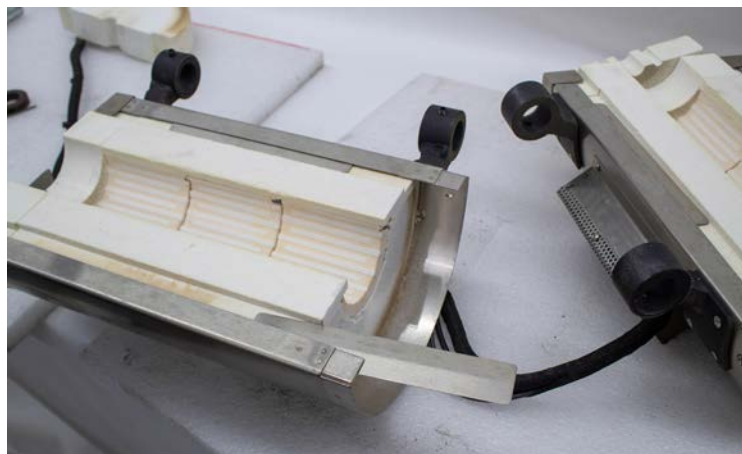
Step 5: Flanges being removed.



Step 6: Gently remove the end disk from both sides of the furnace.

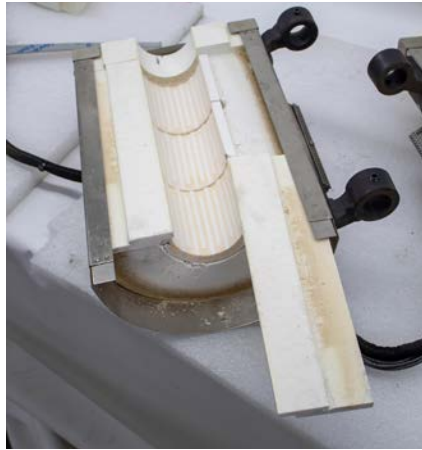


Step 7: Remove the faceboard retainer. Use a metal straight edge and tap the retainer so that it comes out the other end. Retainer may get stuck due to hitting other metal piece.



Retainer stuck by hitting metal piece.

Step 8: After the retainer is out, slowly pull the faceboard out.



Step 9: Verify that old and new faceboards are close in size.



Step 10: Slide new faceboard back in place. Proper way is shown below.



Correct



Incorrect

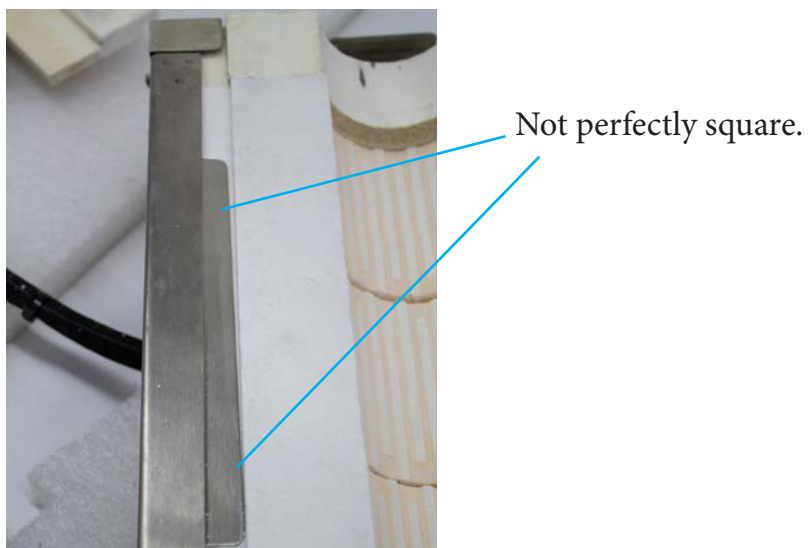
Step 11: Insert new faceboard.



Step 12: Tap retainer in by using a hammer and a metal straight edge until it is back in place.



Step 13: Retainer doesn't have to sit perfectly square.

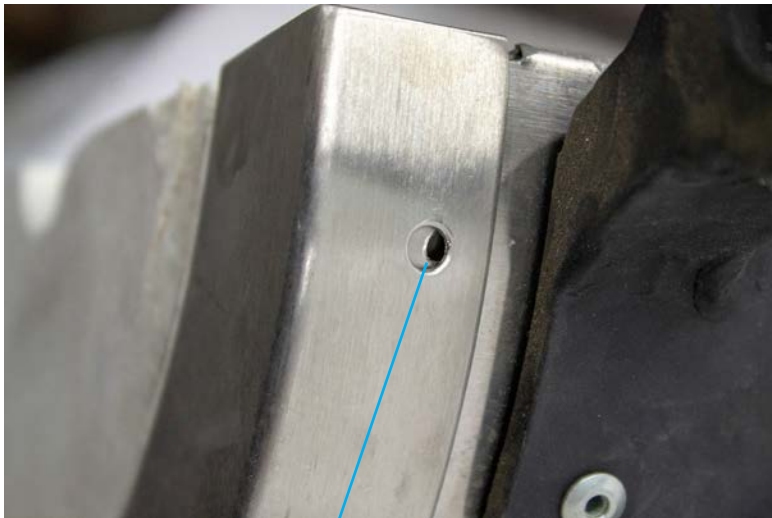


Step 14: Repeat this process for the other side of this furnace half.

Step 15: Put the end disk back in place and re-attach the end metal flanges with screws.



Step 16: If you have trouble removing or attaching the flange screws, use a pipe clamp to apply pressure to help align the screws.

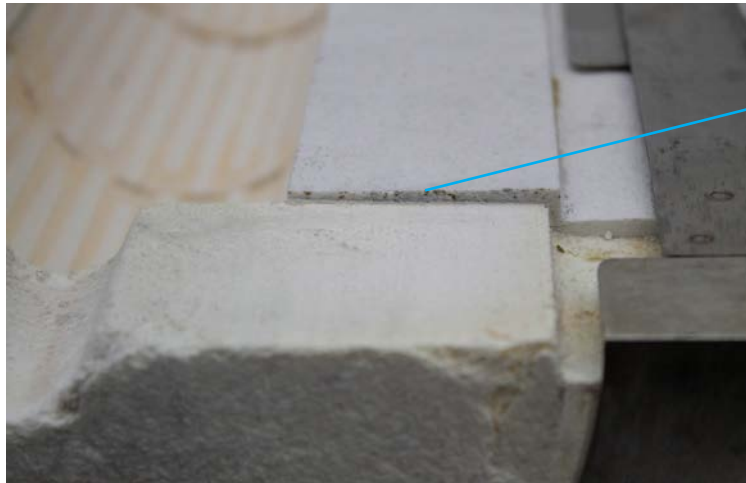


Not aligned



Fitting Replacement Boards

Step 1: If the replacement boards need sanded...



Uneven

Step 2: Use a sanding block with 80 grit paper or finer. Determine the dimensions that needs addressed.



Step 3: Sand in even strokes, checking occasionally until it fits satisfactory.

Step 4: Place both halves of the furnace together. Check to see if all surfaces are matting. If the end disks sit lower than the new faceboards, gently rub the furnace halves back and forth causing the faceboards to sand their sleeves to the correct end disk level. Replace the furnace bar or reattach the hinge, close the furnace and make sure there are no large gaps in the newly replaced faceboards. Some adjustment to the latches may be required.